



How can municipalities promote the sustainable development in their territories?

THE TERRITORIAL AND ENVIRONMENTAL DIMENSIONS

European Habitat

17 March 2016

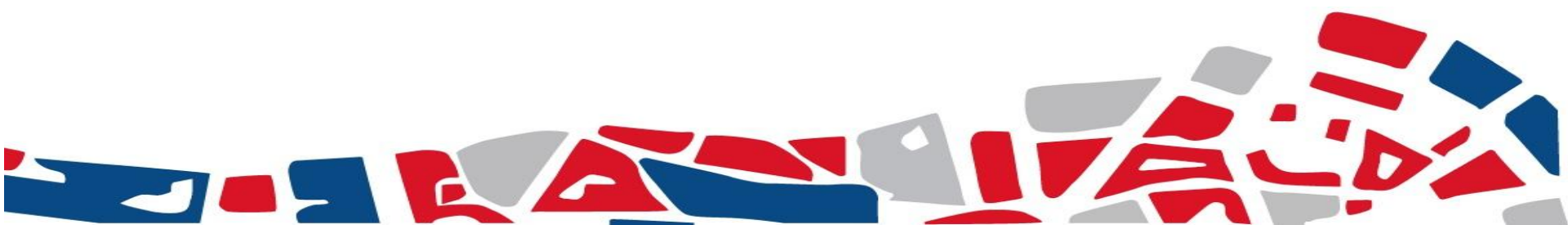
Conference Hall, Prague Congress Centre, Prague, Czech Republic



1) How do European towns and regions work with the surrounding territories to promote sustainable urban development?

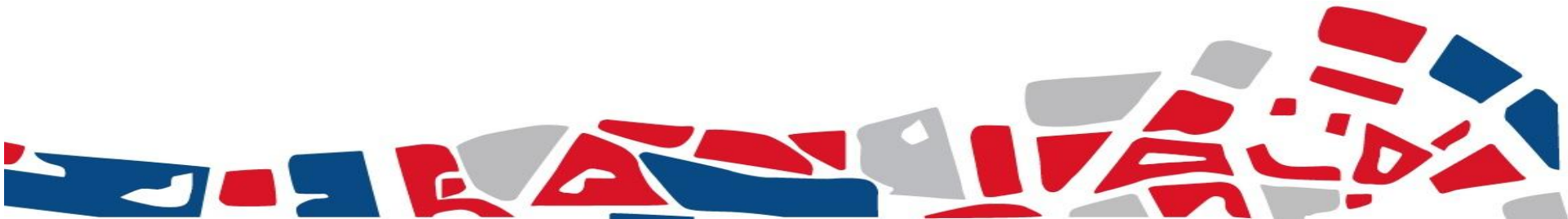


**The example of
Integrated sustainable urban development
strategy**

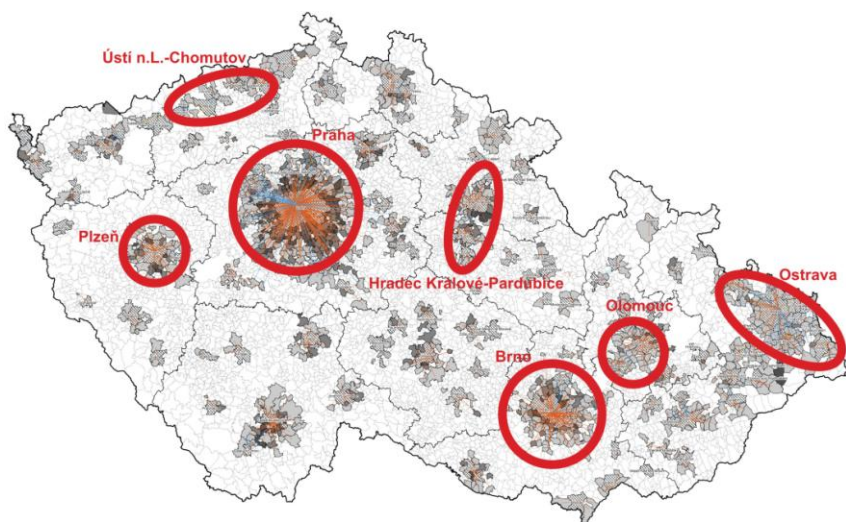




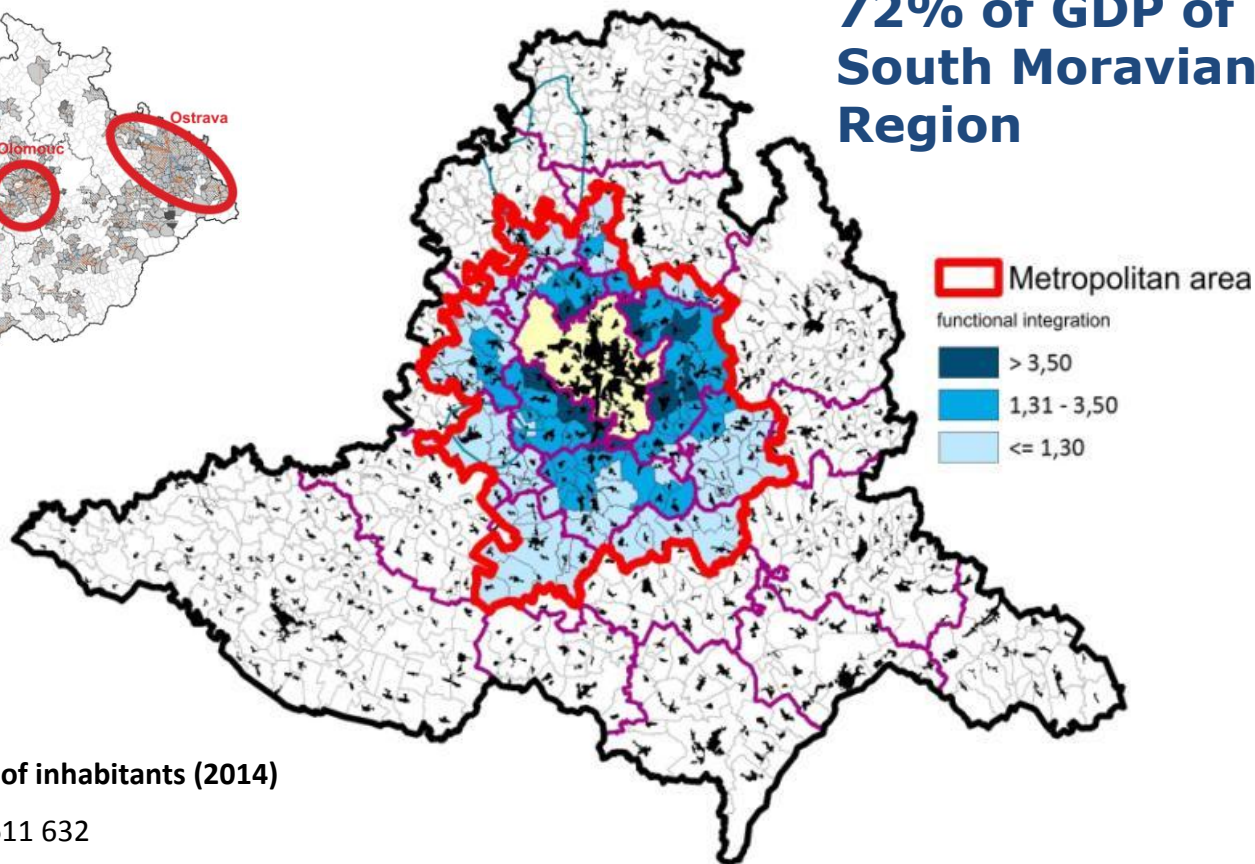
Integrated sustainable urban development

- IUSD – **new priority for the EU 2014 – 2020** funding
 - Ring-fencing funding – at least **5% of the ERDF resources** allocated to each Member State for IUSD
 - Implemented through the **Integrated Territorial Investment (ITI)** tool
 - **Unique chance** for Brno and its metropolitan area and other metropolitan areas in CZ
- 

Brno Metropolitan area



52% of inhabitants
72% of GDP of South Moravian Region



Number of inhabitants (2014)

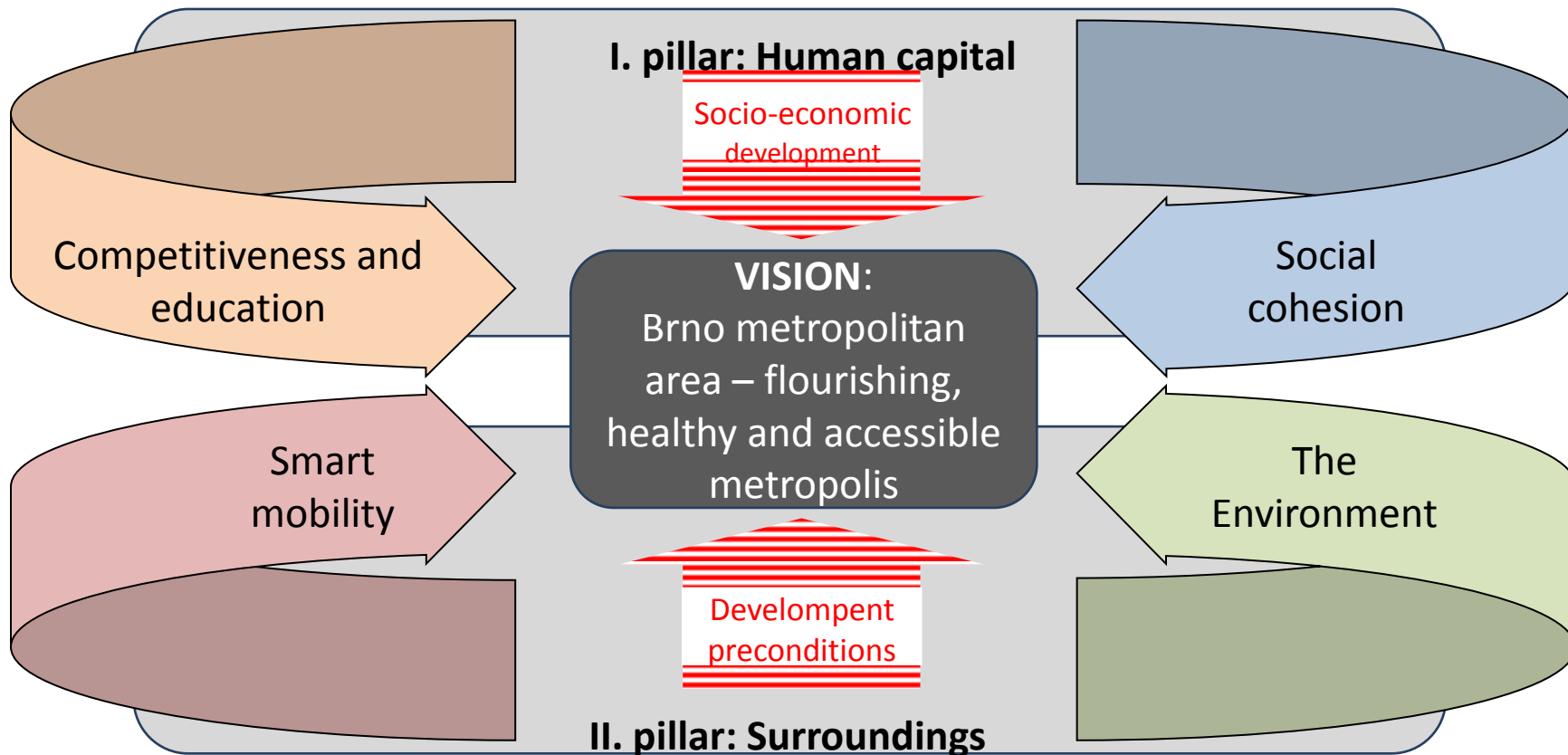
| | |
|-----------------------------------|---------|
| Total number (167 municipalities) | 611 632 |
| Municipalities without Brno | 234 197 |
| Brno | 377 440 |

Engagement of stakeholders

- Memorandum on metropolitan Cooperation with South Moravian Region and 5 municipalities with extended powers in surroundings
- **Steering group** – key stakeholders from BMA
- **Working groups** – 4 thematic priorities
- Ongoing discussions with stakeholders inside and outside the BMA
- Publicity and awareness within BMA (e.g. CLLD – LAGs, public discussions, publications)



Integrated Development Strategy of Brno Metropolitan area



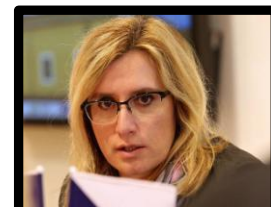
Integrated Development Strategy of Brno Metropolitan area

| <i>Thematic field</i> | <i>Chosen key projects</i> | <i>Operational Programmes</i> |
|-------------------------------|--|--|
| Transport | Extension of tram and trolleybus lines | OP Transport |
| | Transportation terminals (incl. P + R) and traffic telematics | Integrated regional OP, OP Transport |
| | Cycling infrastructure development | Integrated regional OP |
| Environment | An integrated system of collecting, sorting, disposal and recycling of waste | OP Environment |
| | Integrated solutions of environmental risks (droughts, floods) | OP Environment, Integrated regional OP |
| Social cohesion | Social housing, community centers, drop-in centers | Integrated regional OP, OP Employment |
| Competitiveness and education | Support of creative industries – Creative centre | Integrated regional OP, OP Entrepreneurship and Innovation for Competitiveness |

Total allocation of CZ for EU 2014-20: 22 bil. €.

7 ITI areas: 1,1 bil. €

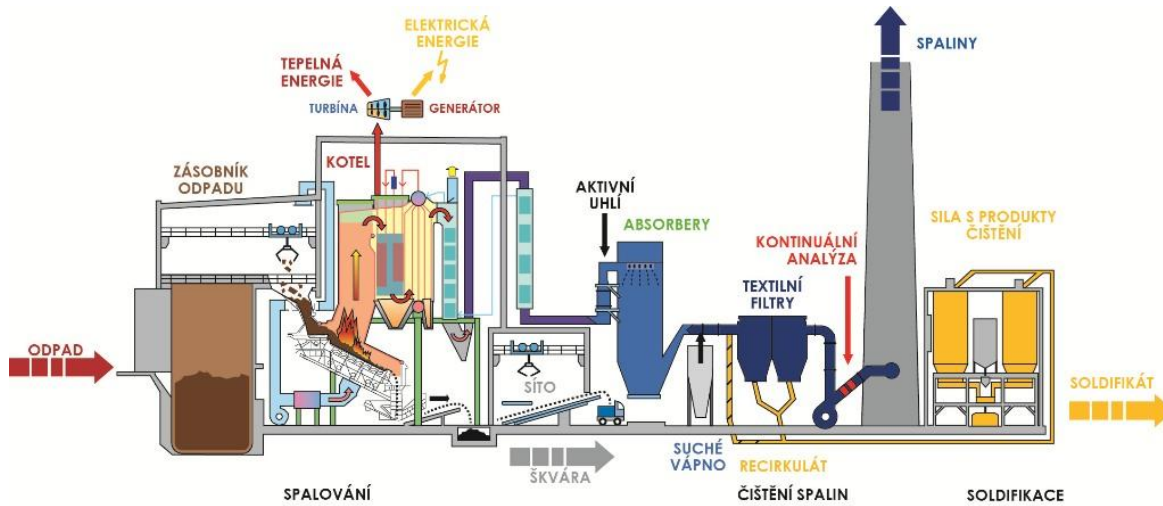
Brno metropolitan area: 0,2 bil. €



REURIS



New amenities for garbage disposal plant

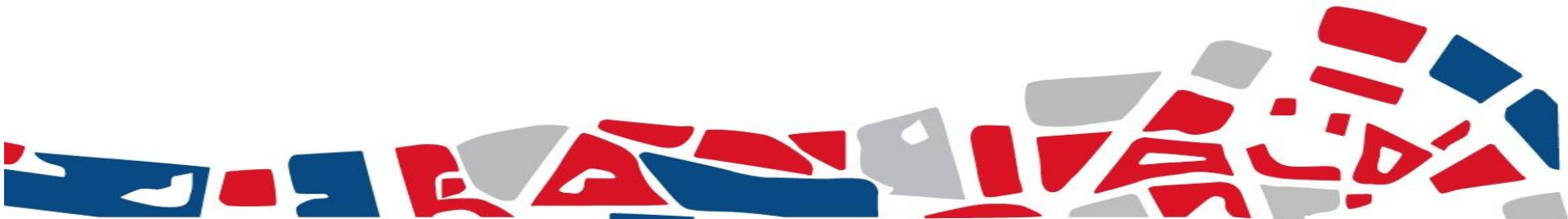




2) How can municipalities **tackle climate change** and its effects and create sustainable and resilient cities?



The example of
urban adaptation strategies using
ecosystem-based approaches to
adaptation



Urban Adapt

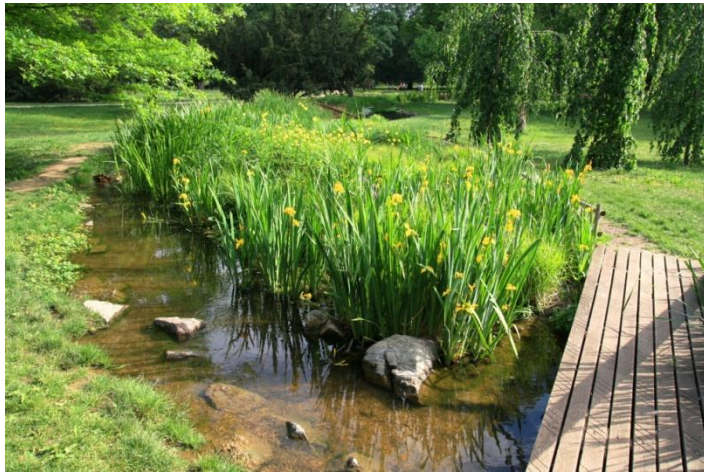
- Project coordinated by **Global Change Research Institute AS CR**, Department of Human Dimension of Global Change.
- Aim - to propose and evaluate **suitable adaptation measures and actions** with the support of **ecosystem-based approaches**
- **3 pilot cities** in the Czech Republic (**Prague, Brno, Pilsen**) - the process of urban adaptation strategies development was initiated:
 - In collaboration with stakeholders **relevant adaptation measures identified**, evaluation of the preferred measures in terms of the costs and benefits
 - Basic **adaptation strategies** for the three pilot cities designed
 - Steps for their implementation have to be initiated.

Urban Adapt

urban adaptation strategies using ecosystem-based approaches to adaptation

| MAIN CHALLENGES | ADAPTATION MEASURES |
|---|---|
| Heatwaves, heat island effect within the city | <ul style="list-style-type: none">- Urban greenery – trees, alleys, gardens, parks- Green roofs and facades- Water in the city (fountains, lakes)- Urban gardening |
| Floods | <ul style="list-style-type: none">- Revitalisation of rivers- Greenery and vegetation on riverbanks- Regeneration of wetlands, ponds in the Brno metropolitan area |
| Insufficient rainfall infiltration | <ul style="list-style-type: none">- Surfaces that allow infiltration of rainwater, vegetation, polders- Water retention and reuse |
| Drought and water shortage | <ul style="list-style-type: none">- Use of rainfall water – for watering greenery, service water |

How to deal with heatwaves and heat island effect



How to deal rainfall infiltration and drought





Thank you for your attention!

pacasova.martina@brno.cz

